

The logo for Multi me Learning is centered in a white circular area. The text 'multi me' is in a bold, lowercase sans-serif font, with 'Learning' in a smaller, regular lowercase sans-serif font below it. The background is a vibrant blue with a pattern of faint, overlapping circles. A large, thick, curved band in shades of green and yellow sweeps across the left and bottom of the page, framing the white circle.

# multi me

Learning

To contact multi me for further  
information or to arrange a visit  
by a consultant:

**Email:** [info@multime.com](mailto:info@multime.com)

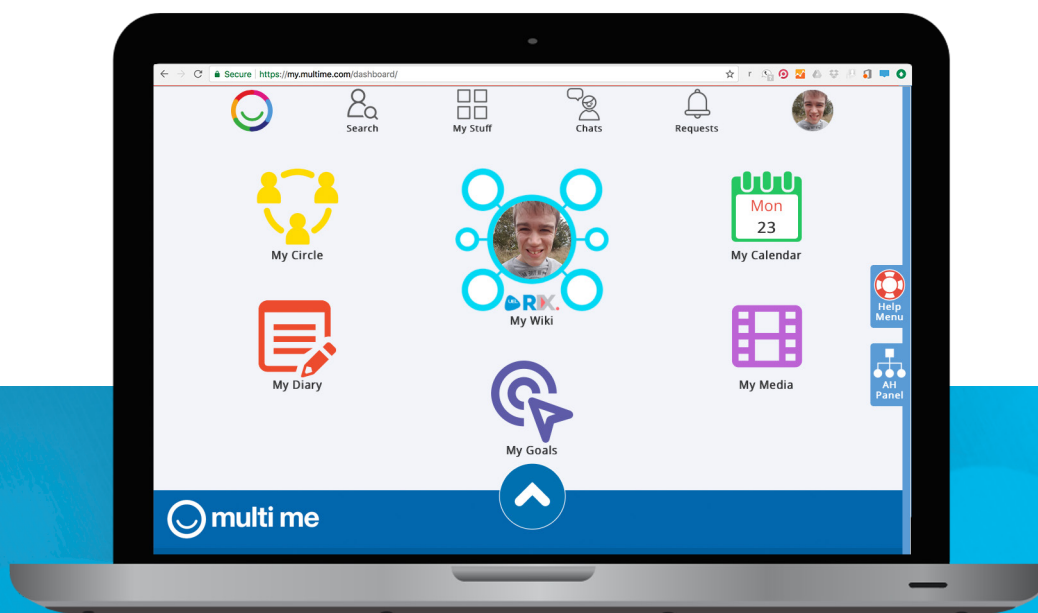
**Visit:** [www.multime.com](http://www.multime.com)

“Multi me is a fantastic tool. Our children and young adults are able to share their goals and achievements in a secure environment with their friends, staff and family.”

**John Riches**, Headteacher at Bardwell School, Bicester

Multi me is a secure online platform for individuals with disabilities and the circle of people that support them in their daily lives. It has a range of accessible tools designed to give people a voice and enable them to have choice and control in their life.

Multi me has been developed from best practice examples of Multimedia Profiling, Person Centred Planning and Circles of Support models and brings together the latest technology and social media approaches to create a unique and powerful solution to 21st century person centred working.



“I just wanted to say how amazing it’s been to look back over this academic year through multi me and the Wiki, that’s something a paper portfolio doesn’t capture... and it’s shared with everyone within that person’s life. Thank you!”

**Sam Sheppard**

Pathways Co-ordinator Abingdon & Witney College

## Learners can create their own personal and fun online space where they can work and interact safely with others.

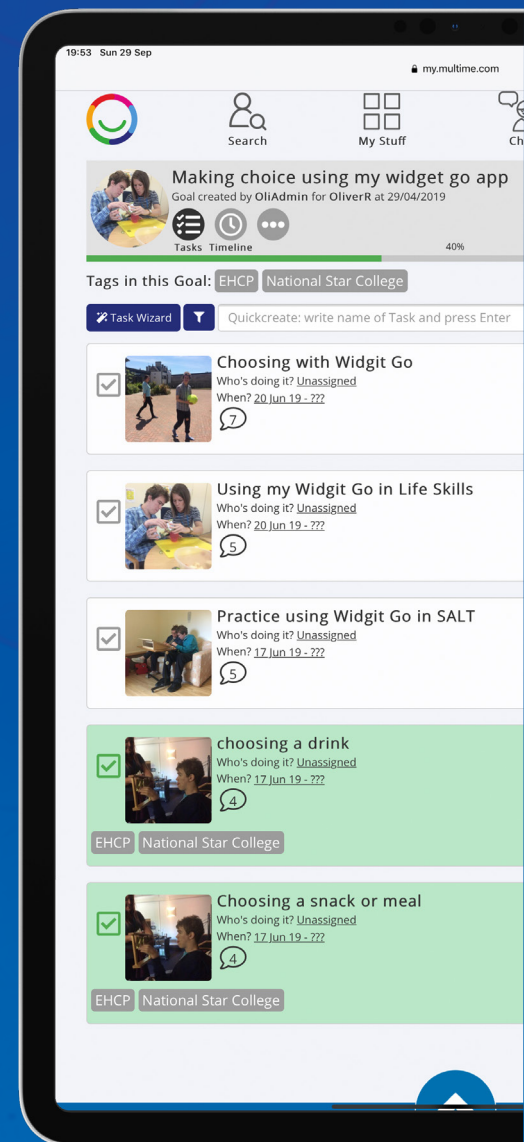
Schools and colleges can build their own secure and moderated communities of sharing and interaction. Here learners and other members can collaborate with their work, start groups, post events and keep in touch with what’s going on in their learning community.

Learners can be paired up with Buddies who can offer a helping hand by vetoing posts and requests, checking that others are interacting safely online and managing their work. Buddies can invite key family and professional members to learner’s Circles.

By using a combination of text, pictures, stickers, photos, audio and videos from their device or YouTube, learners can tell their own stories and use multimedia to communicate.

Using My Goals, learners can add their curricular and non-curricular targets from school and home. People from the individual’s Circle can collaborate around their goals setting new tasks, keeping track of their own deadlines and sharing goal achievements with the Circle.

Multi me empowers learners with a wide range of abilities through digital media and aims to improve outcomes for them through building capacity for Inclusion, citizenship and community. Multi me can improve learners’ engagement and their progress and attainment, contributing to a wider positive ethos in schools and educational institutions.



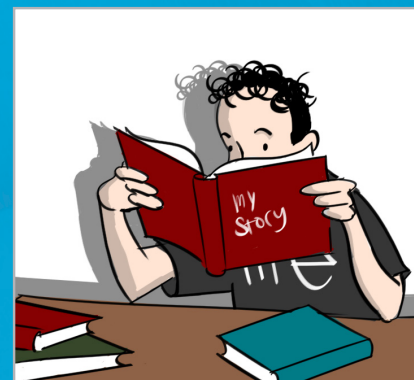
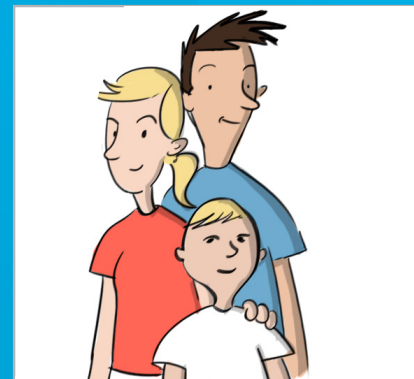
# Portability

## **Multi me is portable! It is designed for effective use by young people and their supporters in their transition from school to further education, training and work.**

Learners will be able to continue to use multi me when they leave school, college, or enter training or employment. They can also continue to use their multi me when they lead their own self-directed support in the community as adults. Multi me belongs to the individual not the service.

By building networks of support, friendship and sharing media, multi me helps learners to start to engage in transition planning from early on, with their peers, families and teaching and support staff.

Multi me facilitates effective planning. It holds information in Person Centred formats that promote the individual's strengths and capabilities.



**Multi me shifts the emphasis towards people and citizenship and away from services and dependency and paves the way for personalised support and budgets.**

# Introducing.... My Wiki!



Multi me has teamed up with **RIX Research & Media** to build a version of their **RIX Wiki** self-advocacy tool on the multi me My Stuff dashboard. My Wiki is an accessible, multimedia 'go-to-place' for all the information about an individual that can be selectively shared with their Circle of Support.

“It really does take a huge weight off my shoulders knowing all Ollie’s information is in one place for all involved to see if anything ever happened to me”

Parent

“Multi me enables me to gather lots of evidence against learners’ IEP targets, and also just to celebrate the children’s individual achievements.”

Teacher, Fitzwaryn Special School



**Multi me provides a learner-centred solution that allows the individual to take ownership of their own learning and achievements, working with friends, families, education, health and care professionals.**

Multi me helps to build a learners’ self-esteem and inspires them to tell their own story, exploring their gifts and talents and nurturing their strengths through collaborative working with peers, families and outside agencies. It helps give individuals the self-confidence and direction they need in life. This enables wide participation of those who support them with accessible tools for event and goal planning, messaging and networking to help organise and monitor progress on their Wiki portfolios, learning goals and multimedia blog.

Multi me empowers learners to take control of the transfer of knowledge and information around their lives.

For learners who are having difficulties engaging with curriculum activities, multi me provides an alternative, fun and creative approach to exploring curriculum subjects.

It is a live up-to-date process that creates a life-long showcase of who the person is, what they have done and their aspirations for the future.

Multi me builds community presence and creates opportunities for building friendships and meaningful relationships with the wider community, and promotes a positive image of individual students aiming to assist in living a 21st century life.

“Multi me has been life changing for James as it has progressed his computer skills and his organisation of ideas. In addition it gives James a platform to express himself and he is certainly springboarding into life!”

Parent, Abingdon & Witney College

### Build your profile

Work with your Circle of Support to build a multimedia profile all about YOU for you to access and share in the cloud.

### Build your Circle

families, friends and professionals can get involved in your learning, communication, planning and development

### Share calendars

See your daily activities in an accessible weekly rota and find new Events in your Communities



### Blog!

Keep a daily diary and share multimedia blogs with your Circle. Link blog posts to your Goals and celebrate achievement

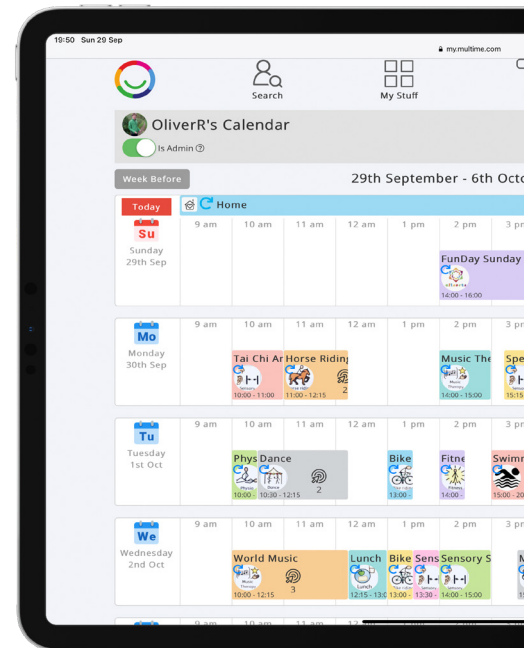
### Manage your files

Keep all your files in the cloud to access anywhere at any time. Share access with your Circle

### Achieve your Goals!

Get help from people in your Circle to plan and achieve your Goals, capture and share using multimedia.

# General Features



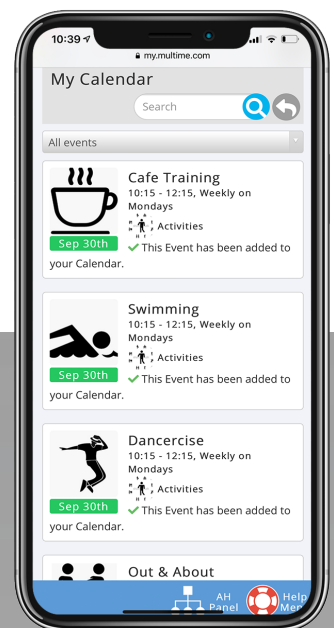
**System requirements.** Multi me is a cloud based application that requires a broadband connection and an up-to-date Internet browser to access. Multi me is optimised for any up-to-date device including smartphone, tablet, laptop and desktop computer browsers. For optimal experience recording media, we recommend using a tablet or smartphone with a camera built in.

**Technology overview.** Built using the latest responsive HTML5 web technologies. The platform offers a fully WCAG 2.1 compliant interface within a safe, secure environment. Additional features include user access controls within closed networks, events and calendar planning, in browser video recording and task co-ordination.

**We are GDPR compliant.** We have always taken the privacy and security of data very seriously. We are not in the business of using or selling our user's personal data. Please go to <https://www.multime.com/privacy-policy> to see how we use and store your personal data. If you are a provider organisation using our system you will also need to be GDPR compliant in how you do this. Please see our website for more information.

**Accessible interface.** For users with cognitive disabilities, multi me needs to be very easy-to-use and accessible. We conform to WCAG guidelines, and are committed to making the site maximally accessible to all. We are fully committed to keep improving the accessibility of our software to allow the maximum participation of its users.

**Server and security:** Our secure AWS servers are hosted in the UK and backed up on a daily basis making sure that we can recover data in case of the rare chance that there is a problem with the site or database. Security is our number one priority. We make sure that the website is protected against all common attacks. The website operates over an SSL connection making sure that all data transmitted between the servers and the web browser is secure and encrypted. We also use a similar process when storing any data.





# Secure Social



**Managed networks.** The multi me secure social network allows communities to build their own managed networks and enables the communication, co-operation and joined-up support of the individual, involving family, friends, professionals and community circles.



**The Account Holder Panel** allows administrators to easily manage their users, Groups and Communities, apply templates, define user roles and manage user access.



**Multimedia friendly.** multi me allows its users to upload, capture or embed a range of media throughout the platform. Users can keep their media organised in their library and create shared libraries for others.

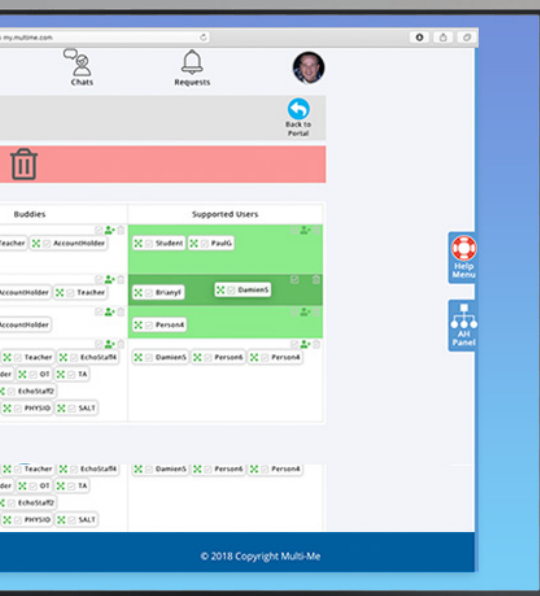
multi me makes using multimedia as a learning tool quick and easy and provides secure and **unlimited** cloud media storage for schools and colleges.



**A Buddy system.** multi me uses a Buddy system to allow teachers, teaching assistants and key supporters to provide help to learners with disabilities to manage their account and develop their work.



**Chats** allows users to create and post instant messages with members of their Circle or Groups. Chats can be moderated or disallowed by Buddies if need be.



## My Stuff

The My Stuff dashboard provides an easy way for all users to navigate the toolkit. Tools are colour coded to help users identify the different functions of the site. Buddies who manage multiple user's Stuff can access this from here.



**My Circle** is a secure social network around an individual supported by their Buddies. It allows learners to add other users into the categories of Friends, Family or Professionals. Buddies can invite users by email to register for a free account to join a learner's Circle.



**My Wiki** (optional add-on) is a multimedia advocacy profiling tool by RIX Research & Media. My Wiki allows learners and their Circles of Support to build and access information about the individual in an accessible and multimedia based format.



**My Diary** allows individuals and their Circle to add to a daily multimedia blog as well as input into a section for important text based information about the individual. Diary posts can easily be linked to a user's own Goals and Tasks showing Goal progression and evidence of achievement.



**My Goals** allows users to set their own goals around things they want to achieve in their lives and break these down into bite-sized Tasks that can be scheduled and assigned to different users in their Circle. The Goals tool has been carefully co-developed with special schools and colleges around education, health and care targets.



**My Calendar** allows users to create a visual overview of their weekly events and activities. The Calendar allows users to create their own (Circle) Events or join Group Events. Events can be made to re-occur in a flexible manner so that learners and classes (groups) can create ongoing rotas of activities.



**My Media** Learners and teachers can add media including digital pictures, videos, audio, most common document file types and Google Docs to their media libraries. Users can organise their media into Folders and share these for others to use. Buddies can share Folders with Circle members and give read/write access.

# A Person Centered Toolkit





# What is it about?

## Your superpower!

Multi me is who you are when you are connected to your natural support network, when everybody in your network is working together to support you and help you achieve your goals.

## Realising potential...

Multi me is a self-development tool. Through exploring the stories of our past, unearthing our qualities and gifts, envisioning our aspirations for the future and harnessing our natural Circle of Support, we become more whole and connected and we can realise our full potential.

## Social media for work and learning...

Multi me encourages a culture of support through digital interaction, multimedia for total communication, social networking for support networking.

## Building support networks...

Great communities are about support of one another, multi me helps individuals find that support and give support to others.

Great communities cherish individuality and embrace growth in one another, finding delight in every kind of difference.

Multi me is about ones circle of friends, support and collaboration. It's about expanding a person's circle through social media in the community.

## Personalised learning...

Multi me allows a broader and much more personal curriculum in schools and colleges, we are all different: If you understand ME then you can help ME with my learning much more effectively and efficiently.

## Being accessible...

Social media is accessible, its an intuitive way of using technology as a communication tool. multi me builds on this accessibility by introducing graphical interface and safety features for disabled and vulnerable users.

## Belonging to the individual...

Multi me belongs to individuals not services. It gives users and their support teams a safe space to store and share thier private information and allows learners to develop informed sharing with their Circle.

Multi me acts as a transition tool from school to college and college to work etc...as it travels with the individual and can be accessed anywhere.

“The staff love the system and it is really fantastic on the move. We have time to log in the day against learning outcomes.”

**Caroline Gibbons**, Teaching Assistant at Abingdon & Witney College



### Made for you

Multi me offers a range of tailor made packages to suit your school/college or service needs.



### Held Communities

Define your level of control; multi me allows your organisation to set up and administer your own secure Communities; invite members; pair up learners with Buddies and moderate and veto network activity as required.



### multi me support

As part of your multi me package, we offer telephone support 9am to 5pm five days a week as well as our online knowledge base and ticketing system for support enquiries.



### Training

Multi me can add value to your CPD programme, offering a range of flexible Multimedia Profiling and Person Centred Planning training packages through its training and consultancy. Please visit <https://www.multime.com/multi-media> for more information.



# multi me Learning

## Benefits and outcomes for individual learners

- **Gives learners skills in the use of multimedia** as a communication tool. Can be used for a wide range of purposes such as Record of Achievements, employment CVs and exploring person-centered themes
- **Improves social and emotional well-being** and develops self-direction; improves motivation, attitude and approach to learning, work and leisure, generates greater independence and is linked with personalisation and use of personal budgets
- **Connects learners up with their community** and helps them get involved in social activities, develop social skills and build a circle of support around them
- **Learner is able to work to her/his own pace** according to needs and to see outcomes of activities and adjust plans accordingly, so this improves goal/task achievement and develops self-esteem
- **Learner is able to engage others better** and to tailor their own learning – flexibility; generating maximum impact and satisfaction for the user
- **Grows with learner** and can help them through childhood and adult life. Multi me can help learners to develop the necessary skills and resources that can enable a smooth transition between services and from school or college into training and work

## Benefits and outcomes for schools and colleges

- **Better engagement with learners –** and learning community - improves self-direction and responsibility in the learner and enables better interaction and communication with him or her – this can link to SEAL programmes where in use
- **Improved participation –** better access to learning and enables greater flexibility in delivering learning
- **Can develop innovative approaches to learning** that can benefit the whole learning community
- **Enables more efficient use of resources –** links to personal budgets and to wider resources from cluster partners and support agencies
- **Can provide evidence of achievement,** especially for learners who don't fit into an accredited framework, linking to Records of Achievement where appropriate
- **Can be made to work** alongside existing management information systems, such as SIMS as well as Learning Environments such as Moodle
- **Helps develop new media and person centred planning pathways** to run alongside existing vocational pathways



# multi me

Learning

To contact multi me for further information or to arrange a visit by a consultant:

**Email:** [info@multime.com](mailto:info@multime.com)

**Visit:** [www.multime.com](http://www.multime.com)